

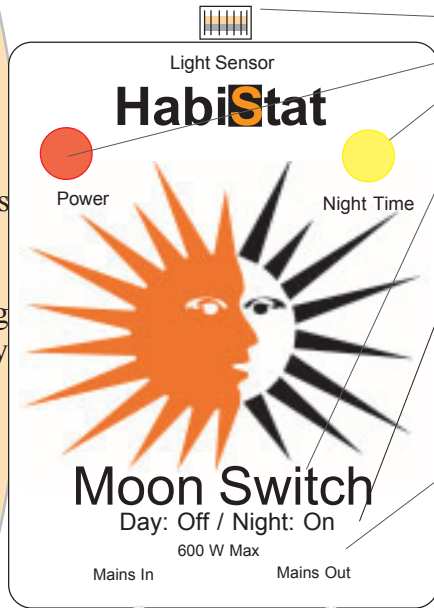
# HabiStat

THERMOSTATS

Herp Shop  
 16 Suspension Street  
 Ardeer, Victoria. Australia 3022  
 TEL: 0061(0)3 9363 6841  
 E-MAIL: sales@herpsshop.com.au

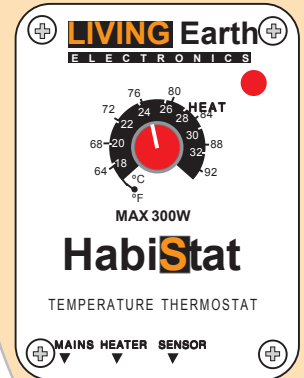
- Electronic, light activated switch for mains equipment.
- Switches up to 600 watts off when the light levels fall and on again when they brighten.
- Used in sophisticated management of environmental heating and lighting.

Both leads are supplied at a useful length. This allows for the maximum flexibility. As the leads must not be cut, they can be tidied with cable ties and this will accommodate any extra wire. The long wires mean virtually any cage can enjoy the benefits of HabiStat control. This brings unparalleled choice, convenience and safety.



- Light Sensor.
- Red LED power indicator.
- Yellow LED lights when the Sun Switch is ON.
- A fully specified HabiStat instrument that meets all current standards.
- An electronic switch that turns the power off when exposed to light and on in the dark.
- 600 watts at 230 V, 50 Hz AC
- Fitted Mains Plug and Output Socket for ease of use.

Heater, heater & thermostat, lights or any other equipment that is to be switched on during the day and off at night.



The three pin socket is the power output from the switch. Plug in whatever equipment is to be switched on and off but do not exceed the 600 watt limit.

The fitted three pin plug is for connection to the domestic mains. It is supplied with a 3 amp fuse which must be replaced with one of the same value if it blows.

## Guarantee

Thank you for buying this HabiStat electronic thermostat. Used in accordance with the instructions this unit will give many years service. There are no user serviceable parts in this unit, so **please do not open it**. Any tampering including the cutting of any wire, will render the guarantee void. This thermostat is guaranteed for one year from the date of purchase against faulty parts and workmanship. In the unlikely event of failure, return it to our distributor, Herp Shop, with a **receipt or proof of purchase** and details of the fault. Herp Shop will ensure your unit is returned to full working order. No liability is accepted other than for the repair or replacement of a faulty product. Statutory rights are not affected



## Basic Guidelines for Heating Vivaria

Reptiles are Ectotherms, that is they heat themselves and regulate their body temperature by means of the environment. They move in and out of hot and cool areas to maintain their preferred temperature. It is therefore important that the vivarium has a suitable temperature gradient for the reptiles to

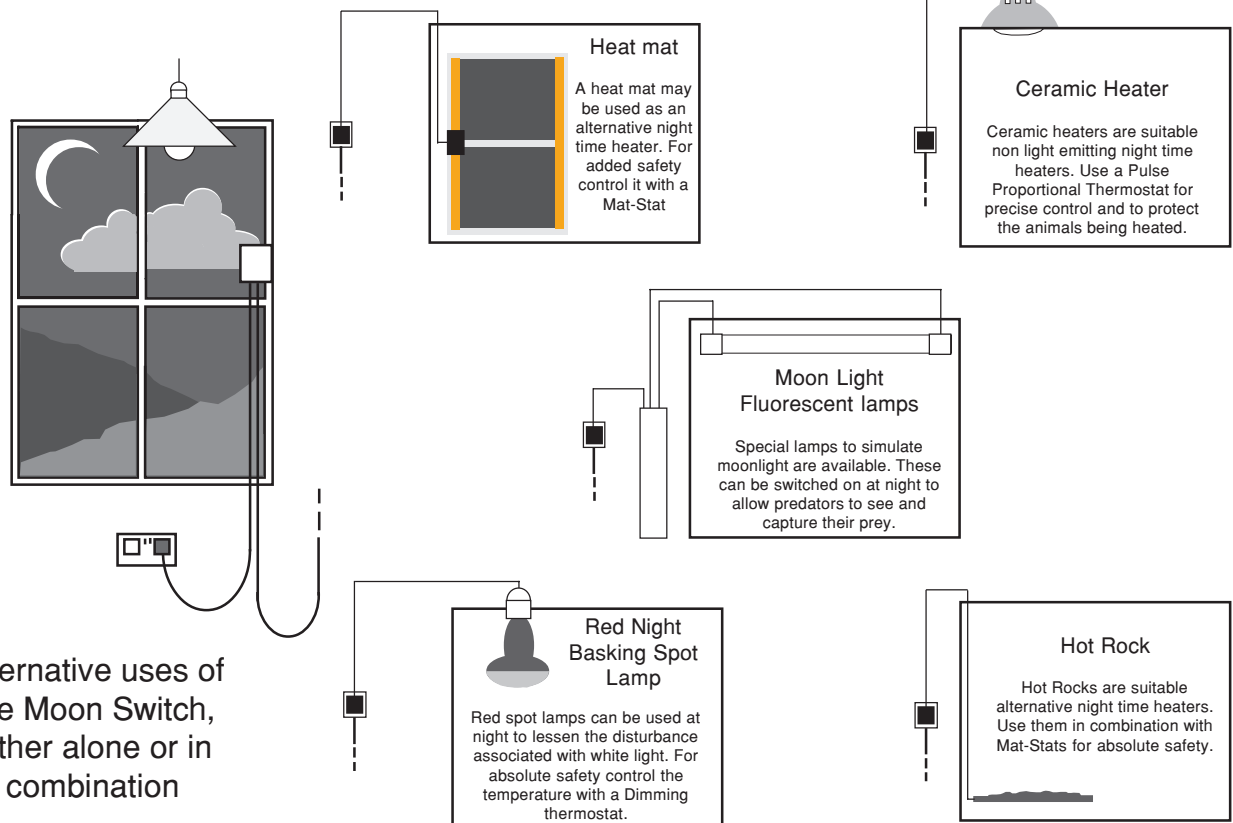
behave naturally. The heater should be placed at one end of the vivarium in a condition that does not heat the whole of the enclosure. In this way the temperature will vary between the hot area near the heater and the cooler areas at ambient temperature. For even greater sophistication, temperatures can be varied with time so that natural warm days and cooler nights are experienced. In the

past, time switches have been used to switch heaters and lights on and off.

The problem with this arrangement was that the subtle changes that occurred with the seasons were not duplicated. Unfortunately it was found that these seasonal changes were the very things that controlled important functions like reproduction.

Clearly what was needed was a light switch that was triggered to mimic the rising and setting of the sun.

The *HabiStat Moon Switch* does just that. Along with other *HabiStat* products, there is little to match the superb environmental control this systems offer. Indeed, even laboratory set ups costing many times the price, fail to offer the precision and value the *HabiStat* system delivers.



Alternative uses of the Moon Switch, either alone or in combination

### ...Using the Moon Switch

The *Moon Switch* will switch a mains power line on and off depending on the light level. When it is light the power will be off and when it is dark the power will be on. The difference between the on and off levels has been adjusted so that the unit does not flicker at the triggering point nor will it switch on and off due to minor variations in brightness.

Essentially the unit detects day and night and can therefore switch things on that are required during the night. The range of items that can be switched is only limited by a maximum load of 600 watts and the imagination.

Most uses will include switching on heaters that are only required during the night. One of the major advantages of the *Moon Switch* is that the natural day/night cycle is duplicated including the seasonal variations of long day length summers and short day length winters.

Reptiles that are active at night are just as dependent upon external heat sources as their day active relatives. The major difference being they are often able to cope with temperatures that are a little lower. The *Moon Switch* will switch on these secondary heaters While the companion *Sun Switch* will switch off the

higher but still necessary day time heaters and brighter lights.

The *Moon Switch* can be used to switch on special lights that are designed for use at night. Red, *Basking Spot Lamps* are an example. Here, red light is used to create a hot spot without the distractions white light may pose for night active creatures. The special fluorescent lamps designed to stimulate moon light are another example.

Many night active creatures need to see their prey and cannot hunt in complete darkness. Ordinary lights are,

however, too bright and are avoided. The subdued light is just right to allow night active predators to spot their prey but not so bright that their natural photoperiod is confused. This means essential synchronisation involving the photoperiod are left intact, so the animal behaves and breeds normally.

The *Moon Switch* is another innovation from *HabiStat* helping the advancement of reptile keeping.

